

# MULTIPLE SCLEROSIS

BOURNEMOUTH BRANCH

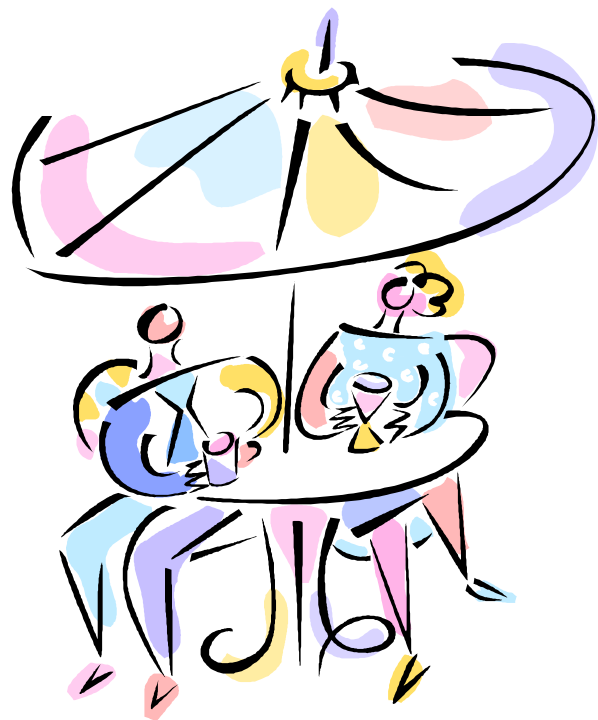


## GARDEN PARTY

SATURDAY 26th JULY from 12.00 NOON

OSBORNE CENTRE,  
CHURCH LANE, WEST PARLEY

Plants  
Jewellery  
Tombola  
Raffle  
Bric a Brac  
Cakes  
Toys  
Books  
Games



Refreshments  
Lunches

Entrance 50p

Multiple Sclerosis Society. Registered charity  
No's. 1139257 / SC041990.  
Registered as a limited company in England &  
Wales No. 07451571